

**GOVERNMENT OF MIZORAM**  
**DISASTER MANAGEMENT & REHABILITATION DEPARTMENT**

\*\*\*

**Subject : Heavy rainfall forecast in Mizoram – reg.**

Under Secretary to the Govt. of Mizoram, I&PR Department may kindly refer to the enclosed copies of Public Notice (English and Mizo) issued by DM&R Department along with its enclosures regarding warning of extremely heavy rainfall during 29<sup>th</sup> May, 2024, issued by the *Govt. of India, India Meteorological Department (Ministry of Earth Sciences), Met Centre Agartala* dated 28.05.2025 (enclosed); and the warning of heavy rainfall, coupled with thunderstorms and gust winds for the coming days as per the forecast issued by the *IMD, RMC, Guwahati and Meteorological Centre, Aizawl* (enclosed).

In view of the aforementioned forecasts as well as in anticipation of the upcoming monsoon season, he is requested to kindly publicize the said notice with wide circulation through the Government websites, local television, newspapers and social media groups.

***Enclo : As stated.***

  
**(R. LALRINZUALI)**

Under Secretary to the Government of Mizoram  
Disaster Management & Rehabilitation Department

**Under Secretary,**  
**I&PR Department**

---

**I.D. No. . No.B.13018/2/2025-DMR : Aizawl, the 28<sup>th</sup> May, 2025**

**No.B.13018/2/2025-DM&R**  
**GOVERNMENT OF MIZORAM**  
**DISASTER MANAGEMENT & REHABILITATION DEPARTMENT**

\*\*\*\*\*

*Aizawl, the 28<sup>th</sup> May, 2025*

**MIPUITE HNENA NGENNA**

India Meteorological Department, Regional Meteorological Centre, Guwahati leh Meteorological Centre, Aizawl-in thu a chhuah angin Assam leh a chhehvela fur ruah a thawh rualin Mizoram hmun thenkhatah ruah nasa tak sur thei dinhmunah a ding mek a, thli leh tek pawh a awm theih thu khawchin thlir lawktute chuan an sawi a ni. A bikin ni 29.05.2025 hian ruah nasa taka sur tura thlir lawk a ni.

Hetiang a nih avang hian chhiatna laka kan him theih nan chhung tinte a theih ang anga fimkhur lehzual turin kan inngen nawn leh a ni.

Khuarel chhiatna thleng palha harsatna tawkte chuan mahni District Emergency Operation Centre (DC Office) theuhte emaw a hnuaia toll free number tarlanahte hian rang taka hriattir tur a ni e:

- 1) District Emergency Operation Centre : 1077
- 2) State Emergency Operation Centre : 1070/0389-2342520
- 3) Emergency Response Support System (ERSS): 112

**Sd/- K. LALRINZUALI**

Secretary to the Government of Mizoram,  
Disaster Management & Rehabilitation Department.

**Memo No. B.13018/2/2025-DMR : Aizawl, the 28<sup>th</sup> May, 2025**

*Copy to:*

- 1) *PS to Minister, DM&R Department*
- 2) *Sr. PPS to Chief Secretary, Govt. of Mizoram*
- 3) *All Deputy Commissioners, Mizoram with a request to take necessary action within their respective jurisdiction.*
- 4) *Director, DM&R*
- 5) *Director, I&PR for wide publicity*

  
**(R. LALRINZUALI)**

Under Secretary to the Government of Mizoram  
Disaster Management & Rehabilitation Department

**No.B.13018/2/2025-DM&R**  
**GOVERNMENT OF MIZORAM**  
**DISASTER MANAGEMENT & REHABILITATION DEPARTMENT**

\*\*\*\*\*

*Aizawl, the 28<sup>th</sup> May, 2025*

**PUBLIC NOTICE**

As per the forecast issued by the India Meteorological Department, Regional Meteorological Centre, Guwahati and Meteorological Centre, Aizawl-looking through over Assam and adjoining area, it is likely that Mizoram will have heavy rainfall, coupled with thunderstorms and gust winds. Warning of extremely heavy rainfall is being predicted on 29<sup>th</sup> May, 2025.

Such being the case, all the people of Mizoram are requested to alert for their safety as far as possible so as to avoid disasters due to heavy rainfall in the State.

It is further requested to contact the concerned District Emergency Operation Centre (DC Office) or the following toll free numbers immediately to respond any kind of disaster which is in operation 24x7:

- 1) District Emergency Operation Centre : 1077
- 2) State Emergency Operation Centre : 1070/0389-2342520
- 3) Emergency Response Support System (ERSS):112

**Sd/- K. LALRINZUALI**

Secretary to the Government of Mizoram,  
Disaster Management & Rehabilitation Department.


**Memo No. B.13018/2/2025-DMR : Aizawl, the 28<sup>th</sup> May, 2025**

*Copy to:*





- 1) *PS to Minister, DM&R Department*
- 2) *Sr. PPS to Chief Secretary, Govt. of Mizoram*
- 3) *All Deputy Commissioners, Mizoram with a request to take necessary action within their respective jurisdiction.*
- 4) *Director, DM&R*
- 5) *Director, I&PR for wide publicity*

  
**(R. LALRINZUALI)**

Under Secretary to the Government of Mizoram,  
Disaster Management & Rehabilitation Department.





Ministry of Earth Sciences  
India Meteorological Department  
Met Centre Agartala




Search

English



 [ABOUT US](#) [CONTACT US](#) [ORGANISATION](#) [PRESS RELEASE](#) [OTHERS](#)



Warnings

Subdivision Wise   District Wise

Nowcast

District Wise   Station Wise

Weather Observations

Daily   1730 IST   AWS

Forecast

Sub-division-wise warnings

Warnings for N. M. M. & T.

Date of Issue: May 28, 2025

|                     |  |
|---------------------|--|
| Day 1: May 28, 2025 | Very Heavy Rain<br>Thunderstorm & Lightning, Squall etc      |
| Day 2: May 29, 2025 | Extremely Heavy Rain<br>Thunderstorm & Lightning, Squall etc |
| Day 3: May 30, 2025 | Very Heavy Rain<br>Thunderstorm & Lightning, Squall etc      |
| Day 4: May 31, 2025 | Heavy Rain<br>Thunderstorm & Lightning, Squall etc           |
| Day 5: June 1, 2025 | Heavy Rain<br>Thunderstorm & Lightning, Squall etc           |
| Day 6: June 2, 2025 | Heavy Rain   |
| Day 7: June 3, 2025 | Heavy Rain   |

© Copyright Met Centre Agartala  
India Meteorological Department  
Ministry of Earth Sciences, New Delhi, India

Visitors: 174840



**India Meteorological Department  
(Ministry of Earth Sciences)  
SPECIAL MESSAGE NO. 1 (BoB/01/2025)**

**TIME OF ISSUE: 1230 HOURS IST**

**DATED: 28.05.2025**

**FROM: INDIA METEOROLOGICAL DEPARTMENT**

**(FAX NO. 24643965/24699216/24623220)**

**TO: CONTROL ROOM, NDM, MINISTRY OF HOME AFFAIRS (FAX.NO. 23093750)  
CONTROL ROOM NDMA (FAX.NO. 26701729)  
CABINET SECRETARIAT (FAX.NO.23012284, 23018638)  
PS TO HON'BLE MINISTER FOR S & T AND EARTH SCIENCES (FAX NO.23316745)  
SECRETARY, MOES (FAX NO. 24629777)  
H.Q. (INTEGRATED DEFENCE STAFF AND CDS) (FAX NO. 23005137/23005147)  
DIRECTOR GENERAL, DOORDARSHAN (23385843)  
DIRECTOR GENERAL, AIR (23421105, 23421219)  
PIB MOES (FAX NO. 23389042)  
UNI (FAX NO. 23355841)  
D.G. NATIONAL DISASTER RESPONSE FORCE (NDRF) (FAX NO. 26105912, 2436 3260)  
DIRECTOR, PUNCTUALITY, INDIAN RAILWAYS (FAX NO. 23388503)  
CHIEF SECRETARY, ODISHA (FAX NO. 0674-2536660)  
CHIEF SECRETARY, WEST BENGAL (FAX NO. 033-22144328)  
CHIEF SECRETARY, ANDAMAN & NICOBAR ISLANDS (FAX NO. 03192-232656)  
CHIEF SECRETARY, TAMIL NADU (FAX NO. 044-25672304)  
CHIEF SECRETARY, ANDHRA PRADESH (FAX NO. 0863-2441029)  
CHIEF SECRETARY, PUDUCHERRY (FAX NO. 0413-2334145)  
CHIEF SECRETARY, GOVT. OF TRIPURA (FAX NO. 0381-2414013, 2413200)  
CHIEF SECRETARY, GOVT. OF MIZORAM (FAX NO. 0389-2322745, 2320588)  
CHIEF SECRETARY, GOVT. OF MANIPUR (FAX NO. 0385-2452629)  
CHIEF SECRETARY, GOVT. OF NAGALAND (FAX NO. 0370-2270057)  
CHIEF SECRETARY, GOVT. OF ASSAM (FAX NO. 0361-2260900)  
CHIEF SECRETARY, GOVT. OF MEGHALAYA (FAX NO. 0364-2225978)  
CHIEF SECRETARY, GOVT. OF ARUNACHAL PRADESH (FAX NO. 0360-2212475)  
CHIEF SECRETARY, GOVT. OF SIKKIM (FAX NO.0359-2222851)**

**Subject: Well Marked Low Pressure area over Northwest Bay of Bengal off Odisha coast**

A Low Pressure Area formed over Northwest Bay of Bengal off Odisha coast in the morning (0830 hours IST) of yesterday, the 27<sup>th</sup> May 2025. It lay as a Well Marked Low Pressure Area over the same region at 0530 hrs IST and persisted over the same region at 0830 hours IST of today, the 28<sup>th</sup> May 2025. It is likely to move slowly northwards and concentrate into a Depression over north Bay of Bengal during next 24 hours.

**Warnings:**

**(i) Rainfall Warning:**

- ❖ Light to moderate rainfall at most places with heavy to very heavy rainfall (07-20 cm) at isolated places is very likely over Arunachal Pradesh, Assam, Meghalaya, Nagaland, Manipur, Mizoram and Tripura on 28<sup>th</sup> May. The intensity would increase thereafter, with heavy to very heavy rainfall at a few places with extremely heavy rainfall (**≥ 20 cm**) at isolated places over Assam & Meghalaya and heavy to extremely heavy rainfall at isolated places over Nagaland, Manipur, Mizoram, Tripura, Arunachal Pradesh, Sub-Himalayan West Bengal and Sikkim on 29<sup>th</sup> & 30<sup>th</sup> May.

- ❖ Light to moderate rainfall at most places with heavy to very heavy rainfall (07-20 cm) at isolated places is very likely over Odisha and Gangetic West Bengal on 28<sup>th</sup> and 29<sup>th</sup> May.

**(ii) Wind Warning:**

- ❖ Squally wind speed reaching 40-50 kmph gusting to 60 kmph is very likely over north and adjoining central Bay of Bengal and along & off Odisha, West Bengal and Bangladesh coasts on 28<sup>th</sup> May. Wind speed would gradually increase becoming 45-55 kmph gusting to 65 kmph on 29<sup>th</sup> May over this region. Thereafter, wind speed would decrease gradually from 30<sup>th</sup> May onwards over this region.
- ❖ Squally wind speed reaching 40-50 kmph gusting to 60 kmph is likely over Nagaland, Manipur, Mizoram, Tripura, Assam, Meghalaya, Arunachal Pradesh, Sub-Himalayan West Bengal and Sikkim during 29<sup>th</sup> -30<sup>th</sup> May.

**(iii) Sea Condition:**

**Sea condition is very likely to be rough to very rough over** north and adjoining central Bay of Bengal and along & off Odisha, West Bengal and Bangladesh coasts during 28<sup>th</sup> – 30<sup>th</sup> May.

**(iv) Fishermen Warning:**

Fishermen are advised not to venture into north and adjoining central Bay of Bengal and along & off Odisha, West Bengal and Bangladesh coasts during 28<sup>th</sup> – 30<sup>th</sup> May.

**(v) Impact Expected and Action Suggested over Northeastern states, Sub-Himalayan West Bengal and Sikkim due to heavy rainfall and squally winds**

**Impact expected:**

- ❖ Breaking of tree branches, uprooting of small trees like banana, papaya, drum sticks. Strong wind and rain may damage plantation, horticulture and standing crops.
- ❖ Partial damage to vulnerable structures due to strong winds and rain.
- ❖ Minor damage to kutcha houses/walls, huts and roads due to heavy rain.
- ❖ Loose objects may fly.
- ❖ Onshore and offshore operations may get affected.
- ❖ Small ships, trawlers and boats may be affected.
- ❖ Road and rail traffic may be affected due to heavy rain and squally winds.
- ❖ There could be localised landslides, mudslides, landslips, water logging, inundation and flooding over low lying areas.
- ❖ Occasional reduction in visibility due to heavy rainfall.
- ❖ Helicopter services may get affected.

**Action suggested:**

- ❖ People are advised to keep a watch on the weather for worsening conditions and be ready to move to safer places accordingly.
- ❖ Take safe shelters; do not take shelter under trees, as there could be lightning.
- ❖ In case of expected lightning, unplug electrical/ electronic appliances, immediately, get out of water bodies and keep away from all the objects that conduct electricity.
- ❖ Tourism and recreational activities to be regulated.
- ❖ Onshore and offshore activities to be judiciously regulated.
- ❖ Helicopter services to be regulated.

**Next bulletin will be issued at 1230 hours IST of tomorrow, the 29<sup>th</sup> May, 2024.**

**(Monica Sharma)**  
**Scientist-D, RSMC & IMD, New Delhi**

*Copy to: ACWC Kolkata/ACWC Chennai/CWC Bhubaneswar/CWC Vishakhapatnam/Meteorological Centres- Port Blair/ Itanagar/ Kohima/ Agartala/ Gangtok/ Imphal/ Aizwal/ Shillong/ Gangtok/ Regional Meteorological Centre Guwahati*

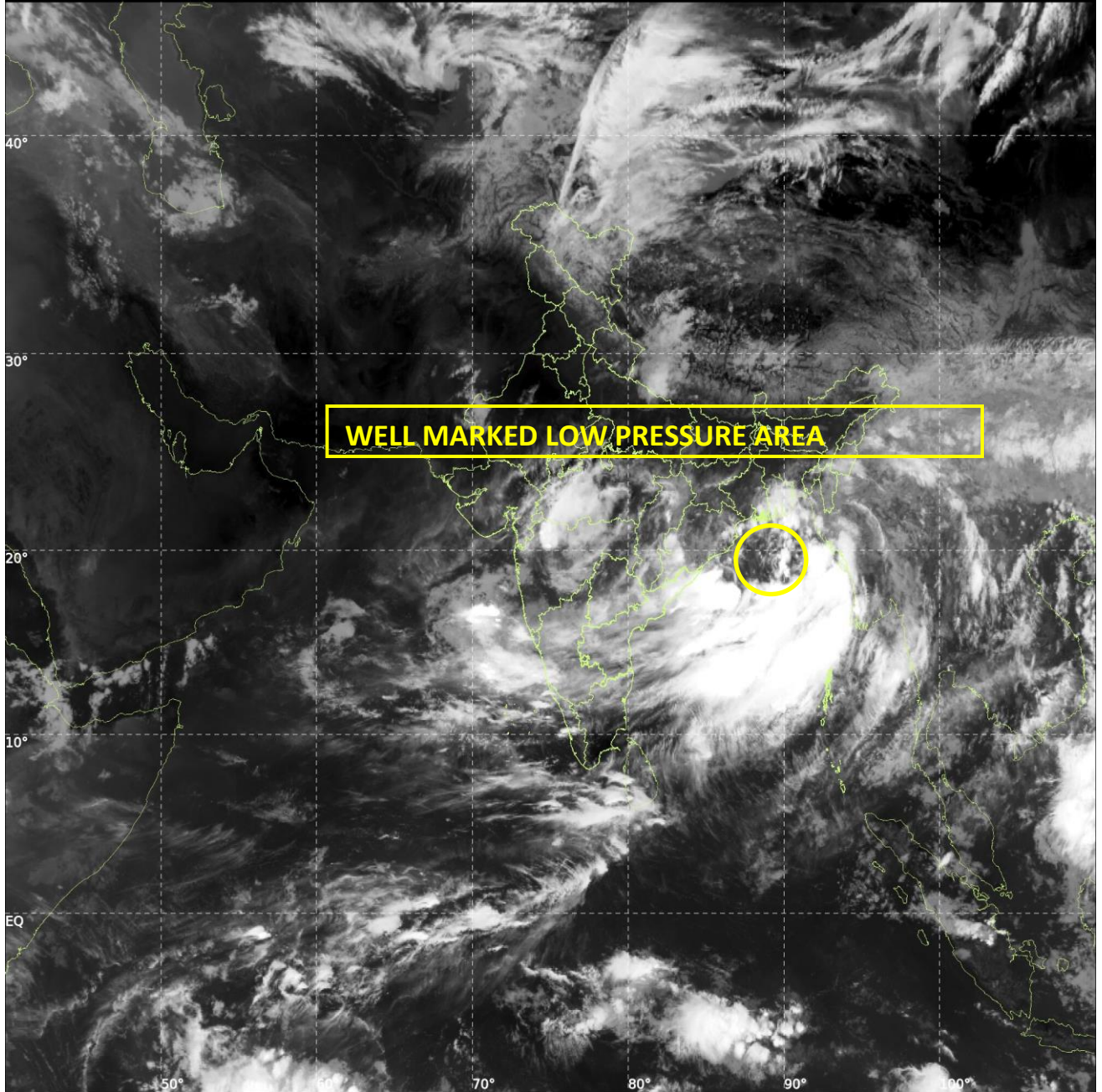


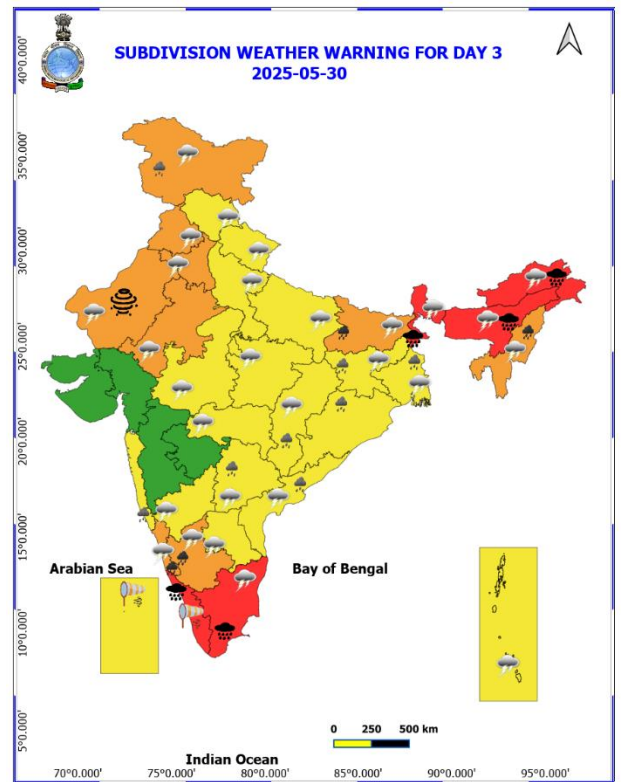
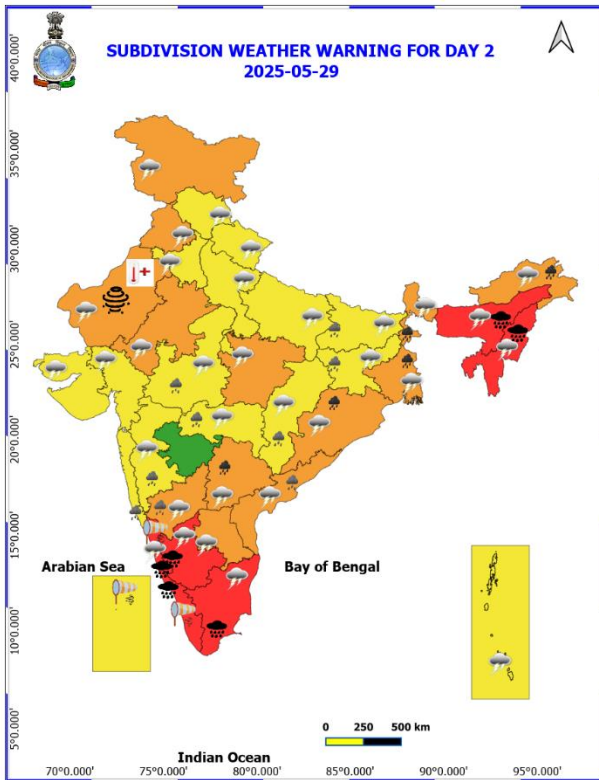
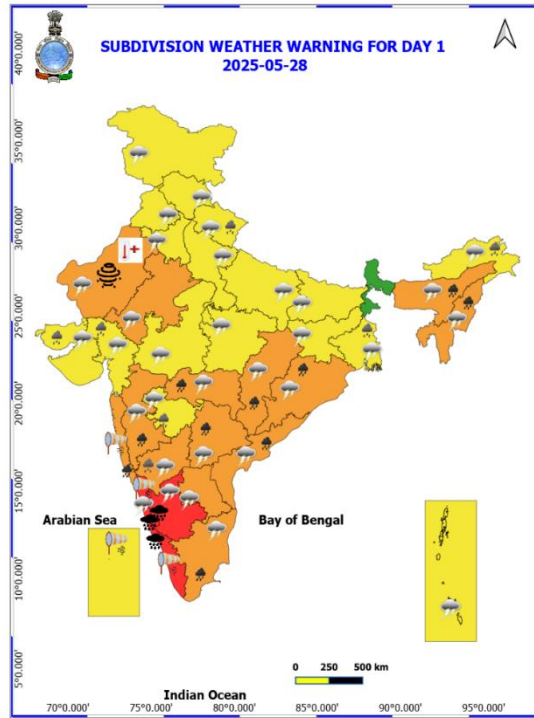


INSAT-3DS IMG, Thermal Infrared1 Count @ 10.83  $\mu\text{m}$   
GMT:28-05-2025/(0300-0327) IST:28-05-2025/(0830-0857)  
L1C MERCATOR (LINEAR STRETCH: 1%)

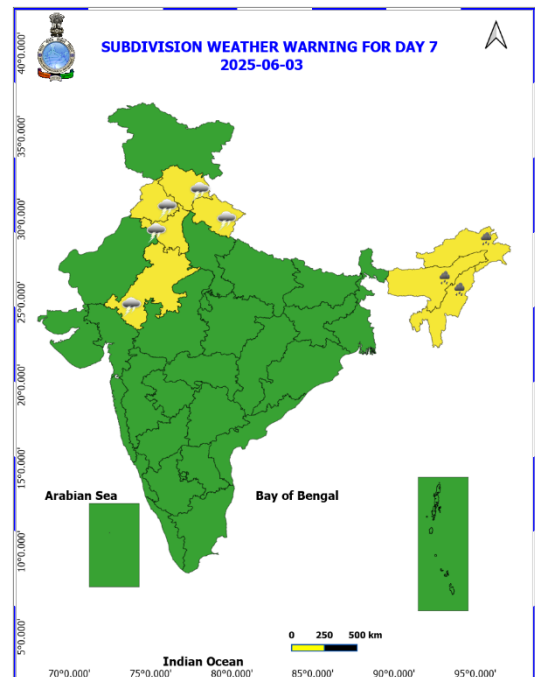
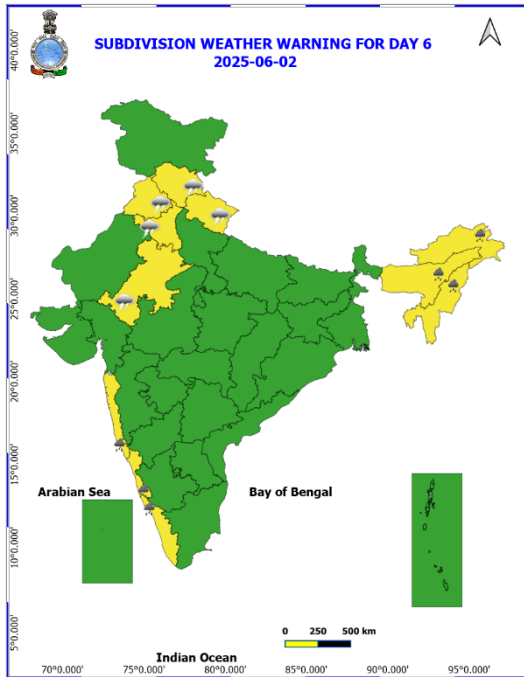
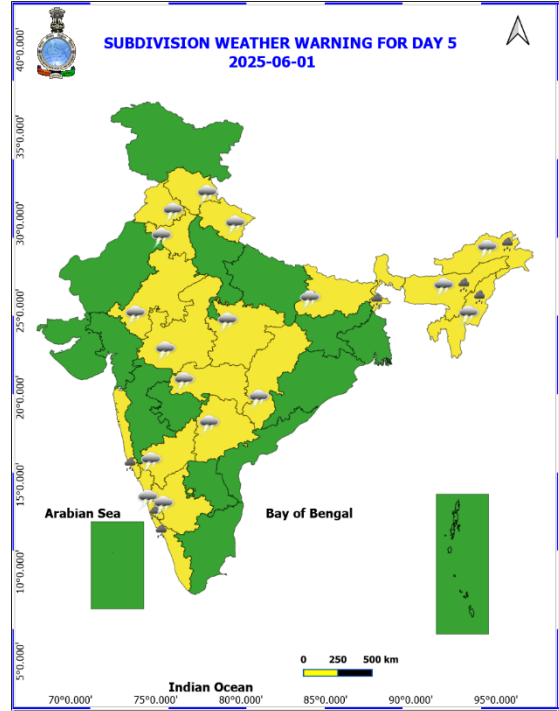
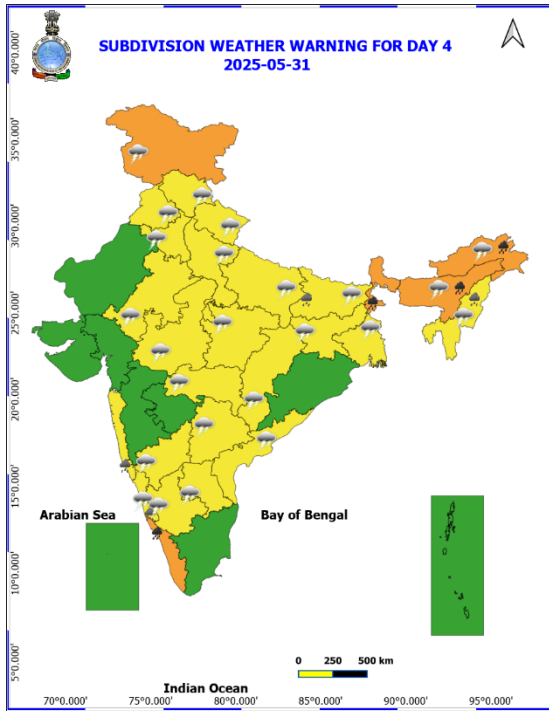
447

923



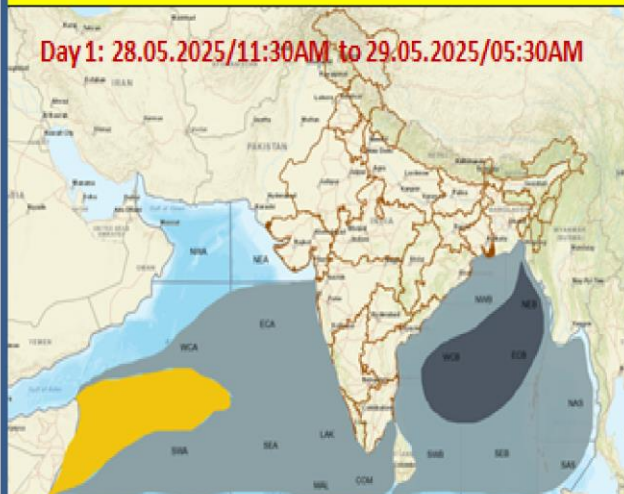




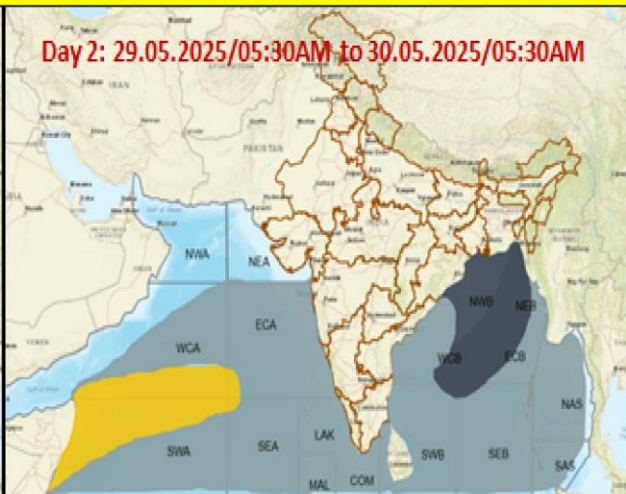


## Fishermen Warning Graphics

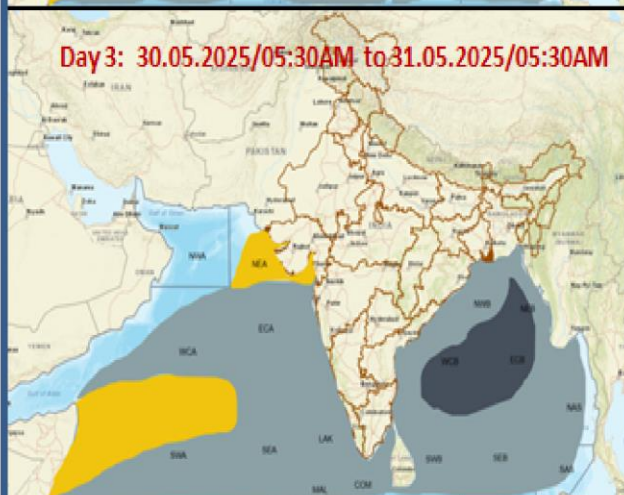
**Day 1: 28.05.2025/11:30AM to 29.05.2025/05:30AM**



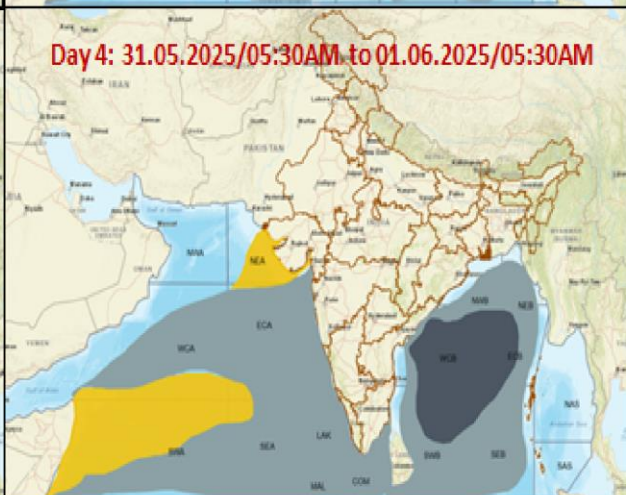
**Day 2: 29.05.2025/05:30AM to 30.05.2025/05:30AM**



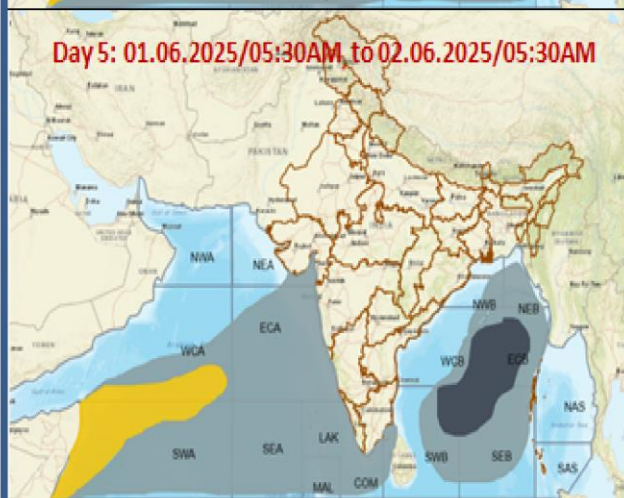
**Day 3: 30.05.2025/05:30AM to 31.05.2025/05:30AM**



**Day 4: 31.05.2025/05:30AM to 01.06.2025/05:30AM**



**Day 5: 01.06.2025/05:30AM to 02.06.2025/05:30AM**



Squally Weather with wind speed 35-50 kmph gusting to 60 kmph

Squally weather with wind speed 45-55 kmph gusting to 65 kmph

Squally wind with speed 45-55 kmph gusting to 65 kmph

**Fishermen are advised not to venture into the marked areas.**



Govt. of India / भारत सरकार  
Ministry of Earth Sciences / पृथ्वी विज्ञान मंत्रालय  
India Meteorological Department / भारत मौसम विज्ञान विभाग  
Regional Meteorological Centre, Guwahati / क्षेत्रीय मौसम केंद्र, गुवाहाटी  
Meteorological Centre, Aizawl / मौसम केंद्र, आइजोल  
Aizawl-796017/ आइजोल- 796017



**Districtwise Weather Forecast for Mizoram**

| State:    |                      | Date:                | 28-May-2025           |                       |                       | Time of issue:        | MID-DAY               |
|-----------|----------------------|----------------------|-----------------------|-----------------------|-----------------------|-----------------------|-----------------------|
| District  | Day1                 | Day2                 | Day3                  | Day4                  | Day5                  | Day6                  | Day7                  |
|           | 28-May-2025          | 29-May-2025          | 30-May-2025           | 31-May-2025           | 1-Jun-2025            | 2-Jun-2025            | 3-Jun-2025            |
| MIZORAM   |                      |                      |                       |                       |                       |                       |                       |
| MAMIT     | WS RA/TS VERY LIKELY | WS RA/TS VERY LIKELY | WS RA/TS VERY LIKELY  | FWS RA/TS VERY LIKELY | FWS RA/TS VERY LIKELY | FWS RA/TS VERY LIKELY | FWS RA/TS VERY LIKELY |
| KOLASIB   | WS RA/TS VERY LIKELY | WS RA/TS VERY LIKELY | WS RA/TS VERY LIKELY  | FWS RA/TS VERY LIKELY | FWS RA/TS VERY LIKELY | FWS RA/TS VERY LIKELY | FWS RA/TS VERY LIKELY |
| AIZAWL    | WS RA/TS VERY LIKELY | WS RA/TS VERY LIKELY | WS RA/TS VERY LIKELY  | FWS RA/TS VERY LIKELY | FWS RA/TS VERY LIKELY | FWS RA/TS VERY LIKELY | FWS RA/TS VERY LIKELY |
| CHAMPHAI  | WS RA/TS VERY LIKELY | WS RA/TS VERY LIKELY | FWS RA/TS VERY LIKELY | SCT RA/TS VERY LIKELY | FWS RA/TS VERY LIKELY | FWS RA/TS VERY LIKELY | FWS RA/TS VERY LIKELY |
| SERCHHIP  | WS RA/TS VERY LIKELY | WS RA/TS VERY LIKELY | FWS RA/TS VERY LIKELY | SCT RA/TS VERY LIKELY | SCT RA/TS VERY LIKELY | FWS RA/TS VERY LIKELY | FWS RA/TS VERY LIKELY |
| LUNGLEI   | WS RA/TS VERY LIKELY | WS RA/TS VERY LIKELY | FWS RA/TS VERY LIKELY | FWS RA/TS VERY LIKELY | SCT RA/TS VERY LIKELY | FWS RA/TS VERY LIKELY | FWS RA/TS VERY LIKELY |
| LAWNGTLAI | WS RA/TS VERY LIKELY | WS RA/TS VERY LIKELY | WS RA/TS VERY LIKELY  | FWS RA/TS VERY LIKELY | SCT RA/TS VERY LIKELY | FWS RA/TS VERY LIKELY | FWS RA/TS VERY LIKELY |
| SAIHA     | WS RA/TS VERY LIKELY | WS RA/TS VERY LIKELY | WS RA/TS VERY LIKELY  | SCT RA/TS VERY LIKELY | SCT RA/TS VERY LIKELY | FWS RA/TS VERY LIKELY | FWS RA/TS VERY LIKELY |
| SAITUAL   | WS RA/TS VERY LIKELY | WS RA/TS VERY LIKELY | WS RA/TS VERY LIKELY  | FWS RA/TS VERY LIKELY | FWS RA/TS VERY LIKELY | FWS RA/TS VERY LIKELY | FWS RA/TS VERY LIKELY |
| KHAWZAWL  | WS RA/TS VERY LIKELY | WS RA/TS VERY LIKELY | WS RA/TS VERY LIKELY  | FWS RA/TS VERY LIKELY | FWS RA/TS VERY LIKELY | FWS RA/TS VERY LIKELY | FWS RA/TS VERY LIKELY |
| HNAHTHIAL | WS RA/TS VERY LIKELY | WS RA/TS VERY LIKELY | FWS RA/TS VERY LIKELY | SCT RA/TS VERY LIKELY | SCT RA/TS VERY LIKELY | FWS RA/TS VERY LIKELY | FWS RA/TS VERY LIKELY |

**\*\*The forecast for any day is valid from 0830 hours IST of the day till 0830 hrs IST of the next day**

**Legend:** RA-Rain, TS-Thundershowers, SFG- Shallow Fog, MFG- Moderate Fog;

| Weather Distribution |                         | Probability of Occurrence(%) |       |
|----------------------|-------------------------|------------------------------|-------|
| DRY                  | No Rain                 | Unlikely                     | <25   |
| ISOL                 | One/Two places (01-25%) | Likely                       | 25-50 |

|            |                       |                    |       |
|------------|-----------------------|--------------------|-------|
| <b>SCT</b> | Few places (26-50%)   | <b>Very Likely</b> | 50-75 |
| <b>FWS</b> | Many places (51-75%)  | <b>Most Likely</b> | >75   |
| <b>WS</b>  | Most places (76-100%) |                    |       |

% Station Reporting Rainfall

| % Stations     | Category  | % Stations   | Category                                     |
|----------------|---|--------------|--|
| <b>76-100</b>  | <b>Widespread ( WS/ At Most Places)</b>         | <b>26-50</b> | <b>Scattered ( SCT/At a Few Places)</b>      |
| <b>51-75</b>   | <b>Fairly Widespread ( FWS/ At Many Places)</b> | <b>1--25</b> | <b>Isolated ( ISOL/At One or Two Places)</b> |
| <b>No Rain</b> | <b>Dry</b>                                      |              |  |

kindly download and use "MAUSAM App" for location specific forecast and warning, "Meghdoot App" for Agromet advisory and "Damini App" for Lightning warning .

For updated detailed weather forecast, kindly visit our website (<https://mausam.imd.gov.in/guwahati/>)

Phone: - 0361-2968 241, 242





Govt. of India / भारत सरकार  
Ministry of Earth Sciences / पृथ्वी विज्ञान मंत्रालय  
India Meteorological Department / भारत मौसम विज्ञान विभाग  
Regional Meteorological Centre, Guwahati / क्षेत्रीय मौसम केंद्र, गुवाहाटी  
Meteorological Centre, Aizawl / मौसम केंद्र, आइजोल  
Aizawl-796017/ आइजोल- 796017



**Districtwise Weather Warning**

| State:   | MIZORAM   |  | Date:  | May 28, 2025   | MID-DAY  |
|----------|---|--|--|--|--|
| District | Day1  | Day2   | Day3   | Day4   | Day5   |
|          | 28 May 2025   | 29 May 2025  | 30 May 2025  | 31 May 2025  | 01 June 2025   |
| MIZORAM  |   |  |  |  |  |
| MAMIT    | Thunderstorm with lightning and gusty with wind speed 40 to 50 kmph and heavy to very heavy rain is very likely at isolated places. | Heavy to very heavy rainfall at a few places with Extremely Heavy rainfall at isolated places and squally wind speed reaching 40-50 Kmph gusting to 60 Kmph is very likely . | Thunderstorm with lightning and gusty wind with speed 40 to 50 kmph very likely at isolated places.                          | Thunderstorm with lightning and gusty wind with wind speed 30 to 40 kmph very likely at isolated places.           | Thunderstorm with lightning very likely at isolated places.                |
| KOLASIB  | Thunderstorm with lightning and gusty with wind speed 40 to 50 kmph and heavy to very heavy rain is very likely at isolated places. | Heavy to very heavy rainfall at a few places with Extremely Heavy rainfall at isolated places and squally wind speed reaching 40-50 Kmph gusting to 60 Kmph is very likely . | Heavy to very heavy rainfall at a few places with squally wind speed reaching 40-50 Kmph gusting to 60 Kmph is very likely . | Thunderstorm with lightning and gusty wind with speed 30 to 40 kmph and heavy rain very likely at isolated places. | Thunderstorm with lightning very likely at isolated places.                |
| AIZAWL   | Thunderstorm with lightning and gusty wind with speed 40 to 50 kmph and heavy rain very likely at isolated places.                  | Heavy to very heavy rainfall at a few places with squally wind speed reaching 40-50 Kmph gusting to 60 Kmph is very likely .   | Thunderstorm with lightning and gusty wind with speed 40 to 50 kmph very likely at isolated places.                          | Thunderstorm with lightning and gusty wind with speed 30 to 40 kmph and heavy rain very likely at isolated places. | Thunderstorm with lightning and heavy rain very likely at isolated places. |
| CHAMPAI  | Thunderstorm with lightning and gusty wind with speed 40 to 50 kmph and heavy rain very likely at isolated places.                  | Heavy to very heavy rainfall at a few places with squally wind speed reaching 40-50 Kmph gusting to 60 Kmph is very likely .   | Thunderstorm with lightning and gusty wind with speed 40 to 50 kmph very likely at isolated places.                          | Thunderstorm with lightning and gusty wind with speed 30 to 40 kmph and heavy rain very likely at isolated places. | Thunderstorm with lightning and heavy rain very likely at isolated places. |
| SERCHHIP | Thunderstorm with lightning and gusty wind with wind speed 30 to 40 kmph very likely at isolated places.                            | Thunderstorm with lightning and gusty wind with speed 40 to 50 kmph and heavy rain very likely at isolated places.   | Thunderstorm with lightning and gusty wind with speed 40 to 50 kmph and heavy rain very likely at isolated places.           | Thunderstorm with lightning and gusty wind with wind speed 30 to 40 kmph very likely at isolated places.           | Thunderstorm with lightning and heavy rain very likely at isolated places. |
| LUNGLEI  | Thunderstorm with lightning and gusty wind with wind speed 30 to 40 kmph very likely at isolated places.                            | Thunderstorm with lightning and gusty wind with speed 40 to 50 kmph and heavy rain very likely at isolated places.   | Heavy to very heavy rainfall at a few places with squally wind speed reaching 40-50 Kmph gusting to 60 Kmph is very likely . | Thunderstorm with lightning and gusty wind with wind speed 30 to 40 kmph very likely at isolated places.           | Thunderstorm with lightning very likely at isolated places.                |



|           |   |  |  |  |  |
|-----------|---|--|--|--|--|
| LAWNGTLAI | Thunderstorm with lightning and gusty wind with speed 40 to 50 kmph and heavy to very heavy rain is very likely at isolated places. | Thunderstorm with lightning and gusty wind with speed 40 to 50 kmph and heavy rain very likely at isolated places.   | Heavy to very heavy rainfall at a few places with squally wind speed reaching 40-50 Kmph gusting to 60 Kmph is very likely . | Thunderstorm with lightning and gusty wind with speed 30 to 40 kmph and heavy rain very likely at isolated places. | Thunderstorm with lightning very likely at isolated places.                |
| SAIHA     | Thunderstorm with lightning and gusty wind with speed 30 to 40 kmph very likely at isolated places.                                 | Thunderstorm with lightning and gusty wind with speed 40 to 50 kmph and heavy rain very likely at isolated places.   | Heavy to very heavy rainfall at a few places with squally wind speed reaching 40-50 Kmph gusting to 60 Kmph is very likely . | Thunderstorm with lightning and gusty wind with speed 30 to 40 kmph and heavy rain very likely at isolated places. | Thunderstorm with lightning and heavy rain very likely at isolated places. |
| SAITUAL   | Thunderstorm with lightning and gusty wind with speed 30 to 40 kmph and heavy rain very likely at isolated places.                  | Heavy to very heavy rainfall at a few places with Extremely Heavy rainfall at isolated places and squally wind speed reaching 40-50 Kmph gusting to 60 Kmph is very likely . | Thunderstorm with lightning and gusty wind with speed 40 to 50 kmph very likely at isolated places.                          | Thunderstorm with lightning and gusty wind with wind speed 30 to 40 kmph very likely at isolated places.           | Thunderstorm with lightning very likely at isolated places.                |
| KHAWZAWL  | Thunderstorm with lightning and gusty wind with speed 30 to 40 kmph and heavy rain very likely at isolated places.                  | Heavy to very heavy rainfall at a few places with squally wind speed reaching 40-50 Kmph gusting to 60 Kmph is very likely .   | Thunderstorm with lightning and gusty wind with speed 40 to 50 kmph very likely at isolated places.                          | Thunderstorm with lightning and gusty wind with wind speed 30 to 40 kmph very likely at isolated places.           | Thunderstorm with lightning very likely at isolated places.                |
| HNAHTHIAL | Thunderstorm with lightning and gusty wind with speed 30 to 40 kmph very likely at isolated places.                                 | Thunderstorm with lightning and gusty wind with speed 30 to 40 kmph and heavy rain very likely at isolated places.   | Heavy to very heavy rainfall at a few places with squally wind speed reaching 40-50 Kmph gusting to 60 Kmph is very likely . | Thunderstorm with lightning and gusty wind with wind speed 30 to 40 kmph very likely at isolated places.           | Thunderstorm with lightning very likely at isolated places.                |

**\*\*The warning for any day is valid from 0830 hours IST of the day till 0830 hrs IST of the next day**

| WARNING                            | Probabilistic Forecast |                              |
|------------------------------------|------------------------|------------------------------|
|                                    | Terms                  | Probability of Occurrence(%) |
| WARNING (Take Action)              | Unlikely               | <25                          |
| ALERT (Be prepared to take action) | Likely                 | 25-50                        |
| WATCH (Be Updated)                 | Very Likely            | 50-75                        |
| No Warning (No Action)             | Most Likely            | >75                          |

Kindly download and use "MAUSAM App" for location specific forecast and warning, "Meghdoot App" for Agromet advisory and "Damini App" for Lightning warning .